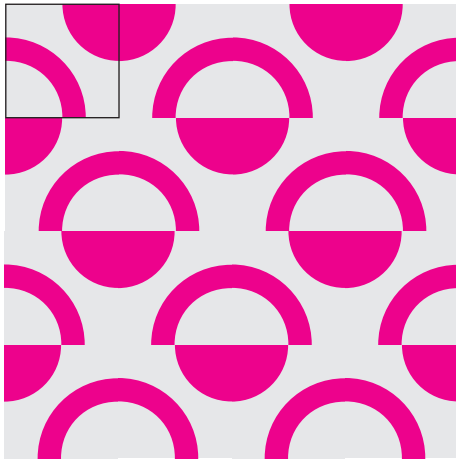


Tipsy Twofer

BY SIMONE BRADFORD

TEMPLATES

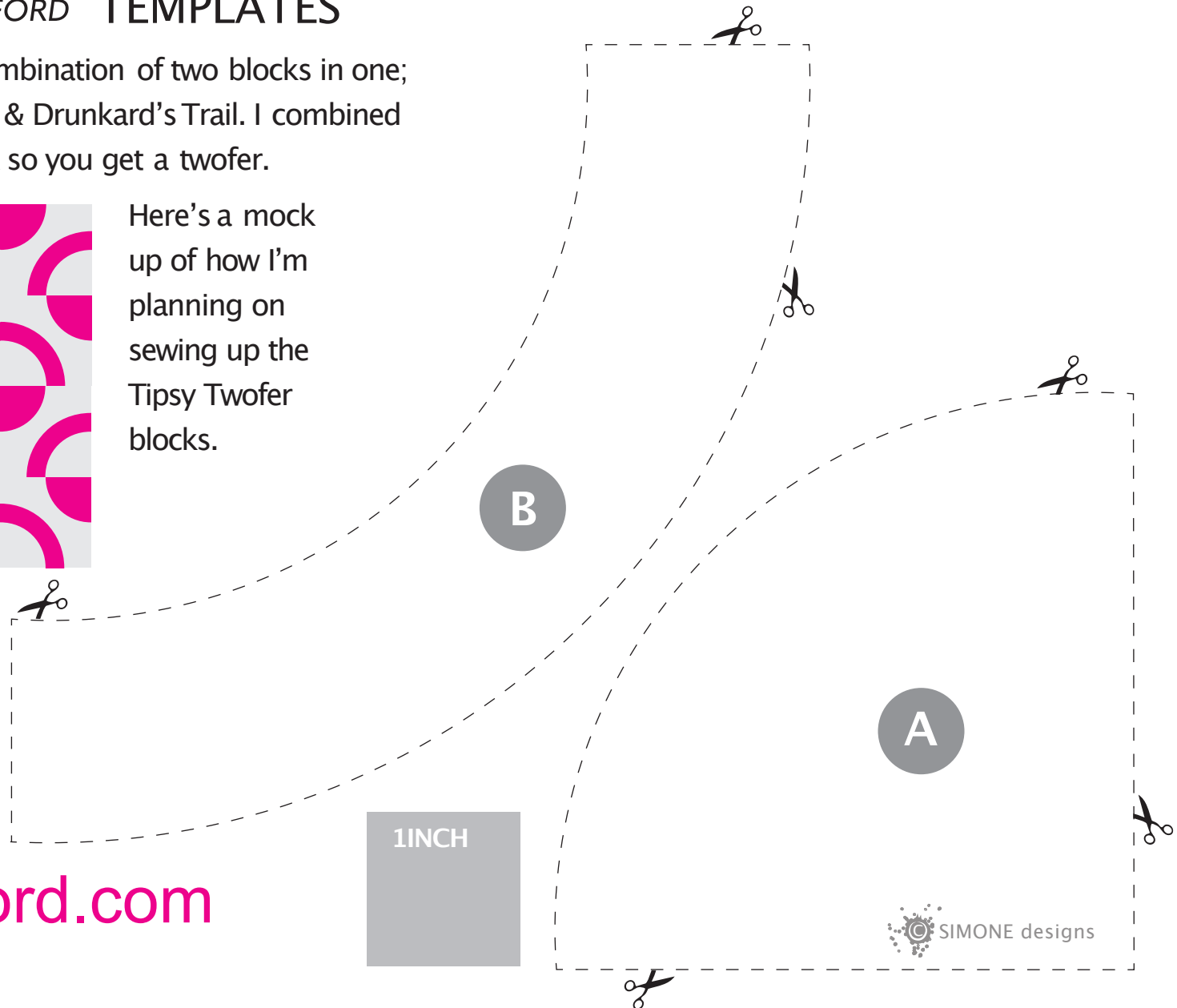
Tipsy Twofer is a combination of two blocks in one; the Drunkard's Path & Drunkard's Trail. I combined them into one block so you get a twofer.



Here's a mock up of how I'm planning on sewing up the Tipsy Twofer blocks.



More info at
simonebradford.com



Tipsy Twofer

BY SIMONE BRADFORD

PREPARATION:

- Gather low volume & contrasting fabric
- Starch all fabric
- Cut out templates A & B.

1

Cut a 7.5" x 7.5" square of low volume fabric. Fold in half and finger press, open and fold in half in the other direction and finger press again.

2

Using templates A & B cut out fabric.

3

Line up A & B on 7.5" x 7.5" low volume square using finger pressed lines as guides. Pin in place.

4

Raw edge appliqué $\frac{1}{8}$ " from edge on A & B as show in sample.

